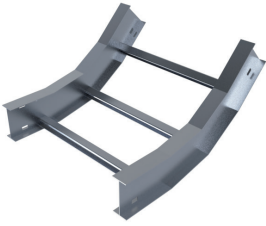


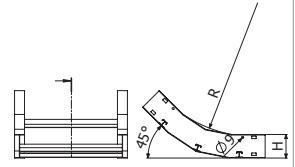


CCI H6

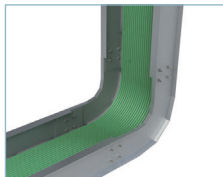


CCI 'A' - 'R' 'B'x'H'

	A (°)	R		B		H		AL	
		inch	mm	inch	mm	inch	mm	REF	Kg/ud
CCI30-12 9X6	30	12	300	9	230	6	150	2/10764	2,00
CCI30-12 12X6	30	12	300	12	300	6	150	2/10765	2,10
CCI30-12 18X6	30	12	300	18	450	6	150	2/10766	2,30
CCI30-12 24X6	30	12	300	24	600	6	150	2/10767	2,51
CCI30-12 30X6	30	12	300	30	750	6	150	2/10768	2,72
CCI30-12 36X6	30	12	300	36	900	6	150	2/10769	2,92
CCI45-12 9X6	45	12	300	9	230	6	150	2/10770	2,37
CCI45-12 12X6	45	12	300	12	300	6	150	2/10771	2,47
CCI45-12 18X6	45	12	300	18	450	6	150	2/10772	2,68
CCI45-12 24X6	45	12	300	24	600	6	150	2/10773	2,88
CCI45-12 30X6	45	12	300	30	750	6	150	2/10774	3,09
CCI45-12 36X6	45	12	300	36	900	6	150	2/10775	3,29
CCI90-12 9X6	90	12	300	9	230	6	150	2/10776	3,69
CCI90-12 12X6	90	12	300	12	300	6	150	2/10777	3,86
CCI90-12 18X6	90	12	300	18	450	6	150	2/10778	4,20
CCI90-12 24X6	90	12	300	24	600	6	150	2/10779	4,54
CCI90-12 30X6	90	12	300	30	750	6	150	2/10780	4,89
CCI90-12 36X6	90	12	300	36	900	6	150	2/10781	5,23
CCI30-24 9X6	30	24	600	9	230	6	150	2/10782	2,49
CCI30-24 12X6	30	24	600	12	300	6	150	2/10783	2,59
CCI30-24 18X6	30	24	600	18	450	6	150	2/10784	2,80
CCI30-24 24X6	30	24	600	24	600	6	150	2/10785	3,00
CCI30-24 30X6	30	24	600	30	750	6	150	2/10786	3,21
CCI30-24 36X6	30	24	600	36	900	6	150	2/10787	3,42
CCI45-24 9X6	45	24	600	9	230	6	150	2/10788	3,21
CCI45-24 12X6	45	24	600	12	300	6	150	2/10789	3,35
CCI45-24 18X6	45	24	600	18	450	6	150	2/10790	3,62
CCI45-24 24X6	45	24	600	24	600	6	150	2/10791	3,90
CCI45-24 30X6	45	24	600	30	750	6	150	2/10792	4,17
CCI45-24 36X6	45	24	600	36	900	6	150	2/10793	4,45
CCI90-24 9X6	90	24	600	9	230	6	150	2/10794	5,38
CCI90-24 12X6	90	24	600	12	300	6	150	2/10795	5,62
CCI90-24 18X6	90	24	600	18	450	6	150	2/10796	6,10
CCI90-24 24X6	90	24	600	24	600	6	150	2/10797	6,58
CCI90-24 30X6	90	24	600	30	750	6	150	2/10798	7,06
CCI90-24 36X6	90	24	600	36	900	6	150	2/10799	7,54
CCI30-36 9X6	30	36	900	9	230	6	150	2/10800	3,09
CCI30-36 12X6	30	36	900	12	300	6	150	2/10801	3,23
CCI30-36 18X6	30	36	900	18	450	6	150	2/10802	3,50
CCI30-36 24X6	30	36	900	24	600	6	150	2/10803	3,77
CCI30-36 30X6	30	36	900	30	750	6	150	2/10804	4,05
CCI30-36 36X6	30	36	900	36	900	6	150	2/10805	4,32
CCI45-36 9X6	45	36	900	9	230	6	150	2/10806	4,06
CCI45-36 12X6	45	36	900	12	300	6	150	2/10807	4,23
CCI45-36 18X6	45	36	900	18	450	6	150	2/10808	4,57
CCI45-36 24X6	45	36	900	24	600	6	150	2/10809	4,91
CCI45-36 30X6	45	36	900	30	750	6	150	2/10810	5,26
CCI45-36 36X6	45	36	900	36	900	6	150	2/10811	5,60
CCI90-36 9X6	90	36	900	9	230	6	150	2/10812	7,07
CCI90-36 12X6	90	36	900	12	300	6	150	2/10813	7,37
CCI90-36 18X6	90	36	900	18	450	6	150	2/10814	7,99
CCI90-36 24X6	90	36	900	24	600	6	150	2/10815	8,61
CCI90-36 30X6	90	36	900	30	750	6	150	2/10816	9,23
CCI90-36 36X6	90	36	900	36	900	6	150	2/10817	9,84



CCI 'A' - 'R' 'B'x'H'



2 x JULI 6 (2/11222)

